

Determining arctic Freshwater fluxes with Cryosat-2

**O. Andersen, K. Nielsen, L. Sørensen, H.
Skourup, Natalia Andersen (DTU)**

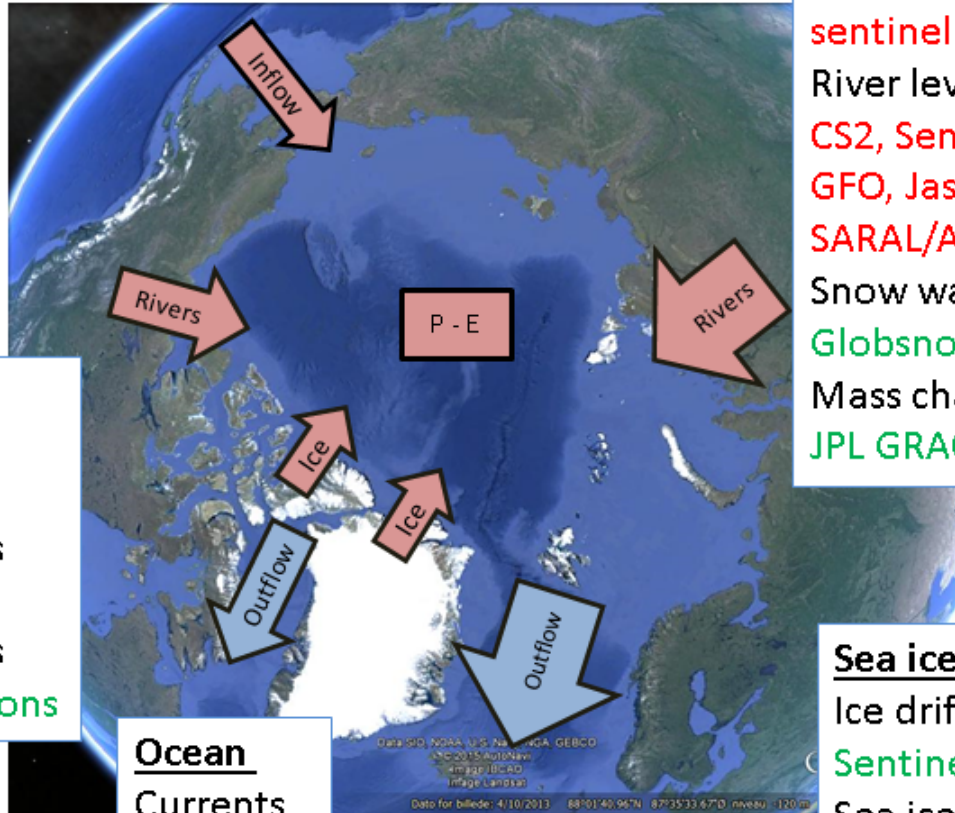
T. Nagler (ENVEO)

Alexei Kouraev + Elena Zakharova (LEGOS)

Diego Fernandez and Christina Surdu (ESA)

DATA use in this project

Existing derived Products from satellites



Rivers

- River width from SAR/optical **sentinel 1 & 2**
- River levels from altimetry **CS2, Sentinel 3, T/P, ENVISAT, GFO, Jason-1,2, probably ERS-1,-2, SARAL/AltiKa**
- Snow water equivalent **Globsnow**
- Mass changes **JPL GRACE masscons**

Ice

- Ice velocities **sentinel 1**
- Ice elevations **CS2, ICESat**
- Mass changes **GRACE masscons**

Ocean

- Currents **CS2**
- Sentinel-3**

Sea ice outflow

- Ice drift products **Sentinel-1, Envisat**
- Sea ice thickness **ENVISAT**
- CS2 products**
- SMOS products**

