

European Space Power Conference 2016

Exhibitor's Brochure

esa

CERTH
CENTRE FOR RESEARCH AND TECHNOLOGY

FORTH/ICE-HT

→ 11th EUROPEAN
SPACE POWER CONFERENCE
ESPC 2016

3 - 7 October 2016
Porto Palace
Thessaloniki, Greece

Welcome Word

Taking in due considerations the opinions expressed by the attendance of the 10th ESPC, this 11th edition is expected to meet better than ever the expectations of its participants. By its location, first: Greece was among the three preferred places and CERTH and FORTH expressed a strong will to co-organize the event, so the choice was almost natural. By its date: this edition takes place only two and a half year after the previous one, a first step towards a two years periodicity. By its papers and presentations: their quality was very appreciated, so we again require an extensive digest of the submitted papers, to base the selection on solid ground. By its exhibition: the same hall will host the booths, the stands for the poster session and all coffee breaks, a guarantee that what exhibitors (and authors) display will get the highest visibility. By its seminars: we have selected subjects of high and generic interest, introduced by top level presenters. By the place offered to the Academia: mutual awareness of what is done there and in Industry, is, in our view, too low and we want to offer to both an opportunity to bridge this gap. And, last but not least, by the choice of speakers at the Opening Session, who will provide the audience with their first-hand experience in domains like power for electric cars or nuclear sources worldwide developments.

Indeed the ESPC is the forum of choice for whoever is interested in all aspects of electrical power for space applications but also for those involved in cutting edge research on these topics for terrestrial applications which, in many cases, have little to envy to space ones.

The conference is intended to cover three main topics:

- Power generation, with solar generators, of course, but also with other types of sources like nuclear or electrochemical ones (primary cells and fuel cells, among others)
- Energy storage, largely dominated by batteries but where regenerative fuel cells show some promises
- Power management and distribution, a wide domain covering every levels of integration from the electrical parts to power subsystem architectures

In each of them, we welcome contributions that will show early results of future technologies, original implementation of new (or old) functions, use of new components or assembly techniques, future concepts that could become the state of the art of tomorrow or the day after, and so on.

For the companies who want to present their products or services, the (non-exclusive) choice of an exhibition booth or an industry session is offered.

Conference Location

ESPC 2016 will take place in Thessaloniki, Greece, at the Porto Palace Hotel

For more information about the Conference Centre, we invite you to visit the official web site at the following address: www.portopalace.gr

Exhibition

Companies are invited to display their products during the conference. A dedicated exhibition hall will be located in the conference centre and, to ensure maximum visibility to the participants, all coffee breaks will take place at the same area. All exhibition booth spaces are two by two meters wide. It is possible to book larger booths at an additional fee.

The exhibition area will be open from Monday 3, 02:00 pm until Friday 7 afternoon.

Industrial Sessions

A number of sessions dedicated to presentations of company products will take place during the conference. These sessions are offered at a fee and priority will be given to sponsors and exhibitors. They can be booked as an additional item using the exhibitor registration form in annex 2.

Conference Centre Map and Exhibition and Posters floor Plan

The Conference Centre Map and the draft Exhibition and Posters floor Plan are provided in annex 1.

Meeting Rooms

Free booking of small meeting rooms, accommodating up to 6 people each, is offered to exhibitors. Those can be booked at the registration desk during the conference.

Exhibition Opening Hours

The exhibition remains open at any time during the conference, but the exhibitors are asked to be present at their booth to meet the conference participants as a minimum during the poster session and all coffee breaks.

Set-up Times

The set-up times are on Sunday, 2 October from 13:00 to 17:00 and on Monday 3 October from 8:00 to 12:00. A sign with your company name will indicate your display area.

Dismantling Times

The exhibit dismantling can start Friday 7 October, after the afternoon coffee break.

Exhibitor Application

Exhibitor registrations (per package): € 1500 (excl. VAT)

Exhibitors should first complete the Exhibitor Application Form (in annex 2) to secure their space and book an (optional) presentation at the industrial session. Upon receipt of the application form they will be instructed on how to register their staff on-line.

Exhibitor Package includes:

- The booking of a 2x2 m booth in the exhibitors hall with power socket, lighting, one table and chairs
- Access to the exhibition hall and to the conference presentations/seminars for 2 persons (extra persons shall register to the conference as normal participants)
- One conference package per person
- The participation of each person to all conference coffee breaks, lunches and social events at the conference centre.

Exhibitor package does **NOT** include the ESPC Gala Dinner. However gala dinner vouchers can be purchased as additional items at the exhibitor on-line registration (€100 TBC).

Conference fees (for extra participants):

- Early registration (payment received before 5 September 2016): €600.00 (excl. VAT) per person.
- Late registration (after 19 August 2016): €750.00 (excl. VAT) per person.

Please note that the number of places for the Gala dinner is limited. Early registration is highly recommended.

Shipping

Exhibitors are responsible for all shipping arrangements and costs. The conference centre can store exhibition material one week before the conference. Further details regarding the shipment procedure will be communicated closer to the commencement of the conference.

Deliveries

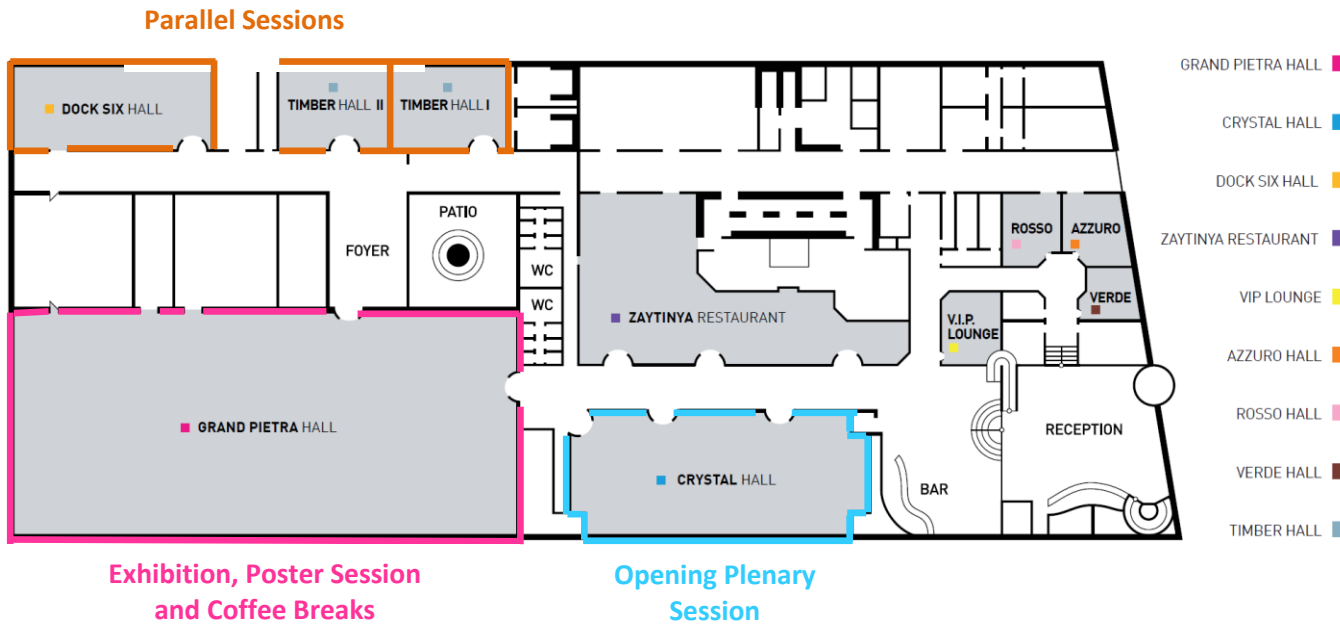
The provided delivery label shall be attached to all items that will be delivered to the Conference Centre. Deliveries are not accepted earlier than a week before the conference.

Deadlines

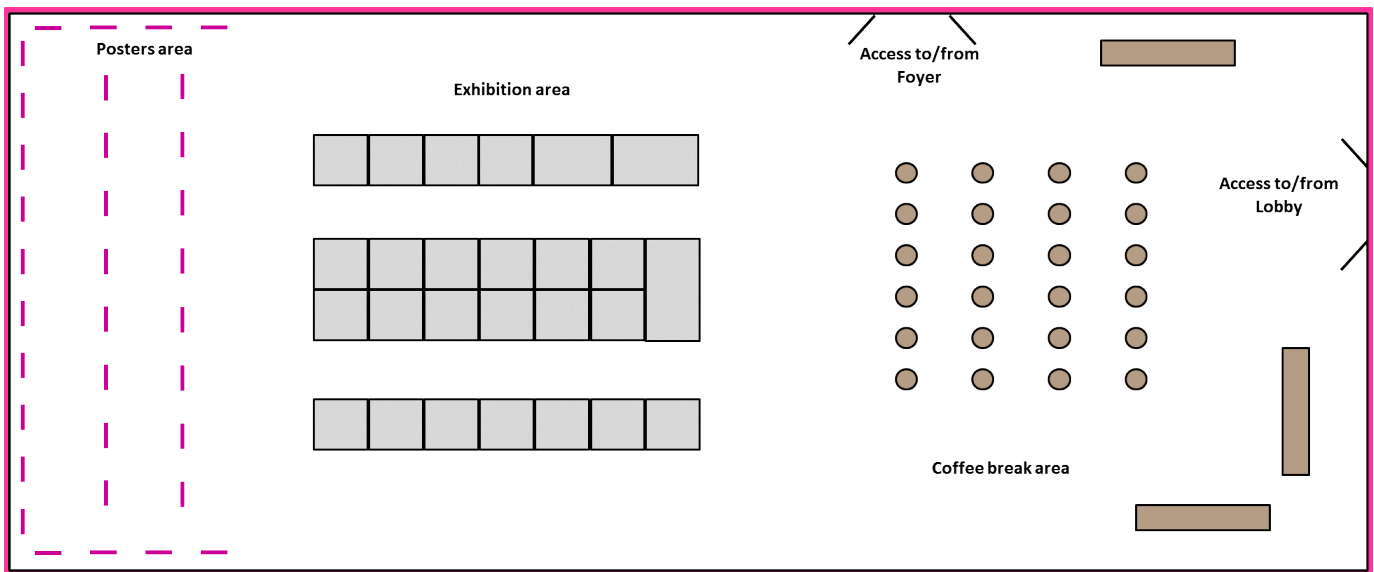
Please submit your exhibition application form to the organisers before the 19 August 2016. Payment will be via an invoice, which should be paid within 15 days of receipt. The booking will be confirmed only after full payment.

Annex 1: Conference Centre and Exhibition Area floor plans

Conference Centre:



Exhibition Area:



Exhibition area layout is shown for information only, the actual one will depend on the number of exhibitors and their choice of booth size. Size of the Grand Pietra Hall is 51 x 22 m.

Annex 2: Application form for Exhibitors – European Space Power Conference 2016

Name of company *(used in final programme and on conference website)*

Contact Person _____

Address _____

Postal Code _____ City _____ Country _____

E-mail _____ Website _____

Your VAT Number _____

Please indicate below the items required. *Multiple exhibition packages can be booked.*

<input type="checkbox"/> Exhibition Package of € 1.500 (2x2 m booth, excl. VAT)	€ 1500 (excl. VAT)
<input type="checkbox"/> Booth 2 x 3 m option	€ 200 (excl. VAT)
<input type="checkbox"/> Booth 2 x 4 m option	€ 400 (excl. VAT)
<input type="checkbox"/> Presentation at Industrial session	€ 150 (excl. VAT)
TOTAL COSTS	€ _____ (excl. VAT)

Terms of payment
Payments must be made in Euro (€) made payable to **ESA Conference Bureau – Congrex Holland BV**. An invoice will be sent after receipt of the application form. The booking will be confirmed after receipt of the application form and the full payment.

Cancellation policy
All cancellations must be made in writing to ESA Conference Bureau - Congrex Holland BV.
Cancellations can be made before **19 August 2016** at no cost.
After this date, **50%** of the total amount is non-refundable, except for cancellations received after **9 September 2016** for which **100%** of the total amount is non-refundable.

(*) Signature of Applicant _____ Date: _____

Name printed: _____

(*) Signing of the *Application and Contract for exhibition space at ESPC 2016* implies acceptance of the terms of payment and the cancellation policy as mentioned above.

Please scan the completed form and return by email to:

ESPC 2016 Secretariat
ESA Conference Bureau - Congrex Holland BV
esa.conference.bureau@esa.int & espc2016-conference@esa.int